



BLATCH  
FINE HOMES

Tel: +44 (0) 24 7624 9333

info@blatchfinehomes.co.uk



10 Butt Lane

Allesley, Coventry, CV5 9EU

**Offers over £850,000**



4



2



2





# 10 Butt Lane



## Description

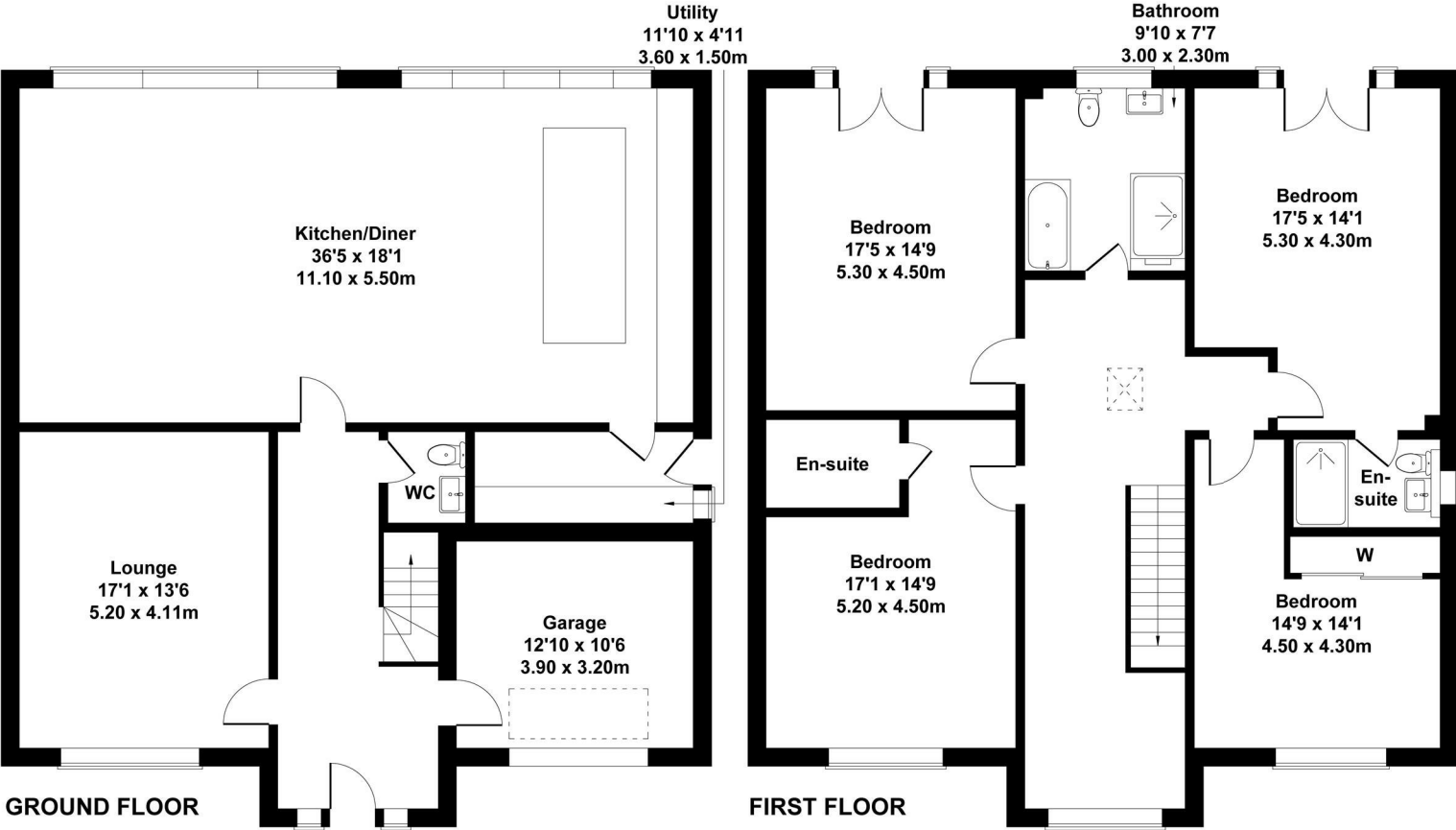
An Exceptional Bespoke New-Build Family Residence - PROJECTED COMPLETION APRIL

A beautifully designed bespoke four bedroom new-build home, created with a focus on space, light, and modern family living. Finished to an exacting standard throughout, this substantial property blends timeless architectural styling with high-performance construction and refined contemporary interiors.

- BESPOKE NEW BUILD HOME IN ALLESLEY
- OPEN PLAN KITCHEN LIVING
- STUNNING CONTEMPORARY ARCHITECTURE
- PROJECTED COMPLETION APRIL
- BALCONY AND ENSUITE WITH PRINCIPAL BEDROOM
- UNDERFLOOR HEATING

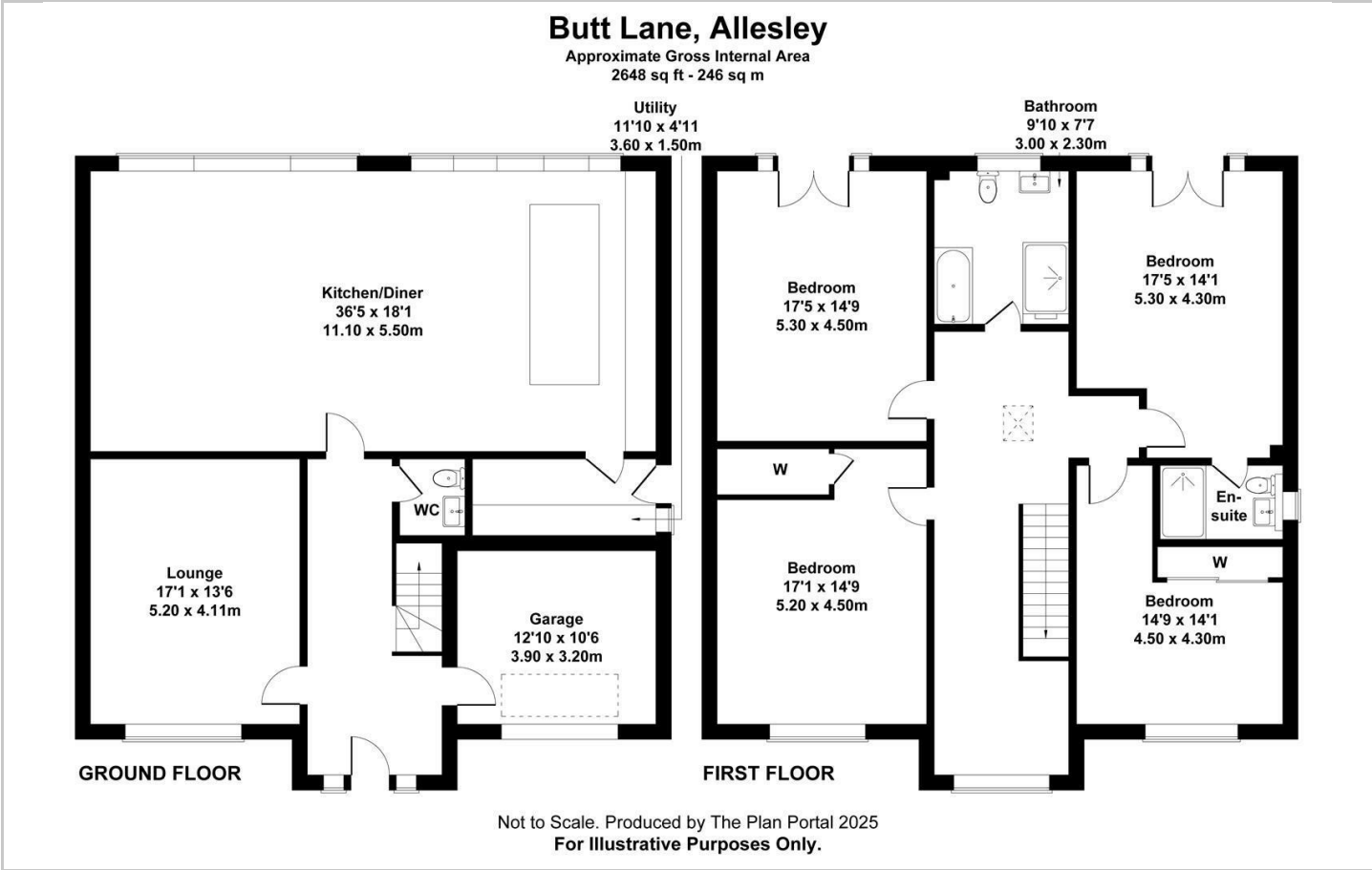
## Butt Lane, Allesley

Approximate Gross Internal Area  
2648 sq ft - 246 sq m

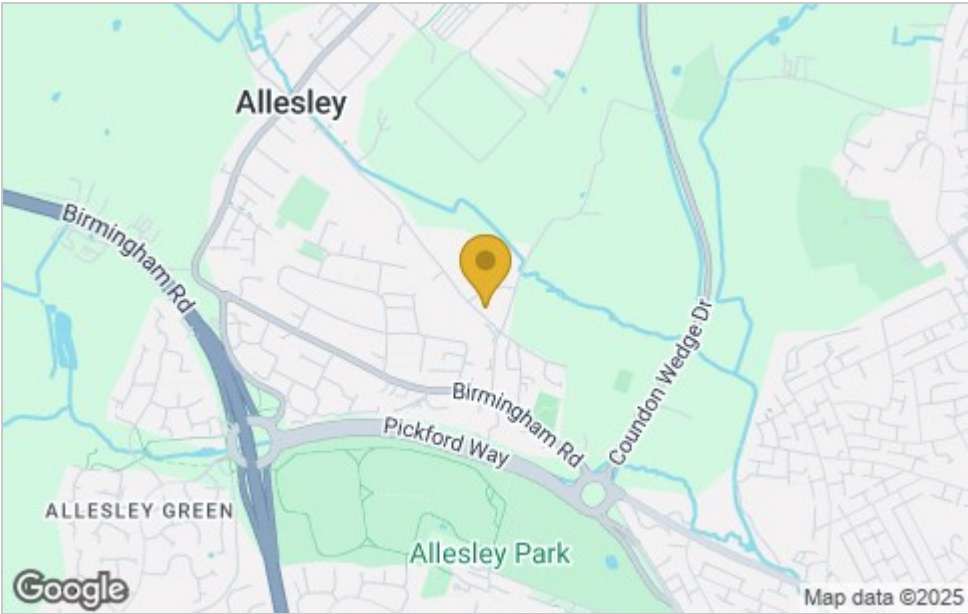




Floor Plan



Area Map



Viewing

Please contact our Coventry Office on 02476249333 if you wish to arrange a viewing appointment for this property or require further information.

These particulars, whilst believed to be accurate are set out as a general outline only for guidance and do not constitute any part of an offer or contract. Intending purchasers should not rely on them as statements of representation of fact, but must satisfy themselves by inspection or otherwise as to their accuracy. No person in this firms employment has the authority to make or give any representation or warranty in respect of the property.

Energy Efficiency Graph

